

MARYLAND

April 2006

Professional Engineer

MDSPE-BACKED MECHANICS' LIEN BILL SIGNED



Provision of engineering services and those of other design professionals are now explicitly included in Maryland's mechanics' liens law, thanks to a two-year effort led by MDSPE. Gov. Ehrlich has signed the bill, which goes into effect on Oct. 1. MDSPE was strongly backed in our efforts by the Maryland Council of Engineering Companies and the Maryland Society of Surveyors.

MDSPE threw its weight behind a mechanics' lien bill last year at the request of Delegate Chris Shenk, a Western Maryland legislator who was seeking wider support for his bill. That bill passed the House of Delegates but stalled in the Senate. To get a better hearing in the Senate, we enlisted Senators to sponsor an identical bill in the Senate.



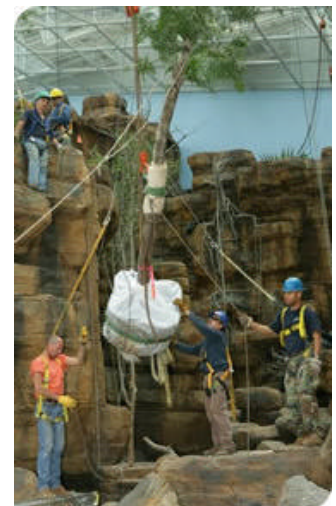
Text of the new law plus frequently asked questions are on our website at www.mdspe.org. Click on State Society, then Bill Profile.

OFFICERS NOMINATED FOR NEW FISCAL YEAR

David S. Thaler, PE, a Baltimore civil engineer, has been nominated to serve as President-Elect for our 2006-2007 fiscal year, which starts June 1. He has been serving as a vice president. Dwight L. Williams, PhD, PE, a nuclear engineer, and Paul M. Sill, PE, have been nominated for vice presidencies, with a third nomination for vice president still open. Eduardo Acevedo, PE, also a civil & environmental engineer, has been renominated as Secretary, and William Mehaffey, PE, has been nominated to serve as Treasurer. Manoj Jha, Ph.D., PE, will ascend to the presidency from his current position as President-Elect.

SAVE THE DATE: JUNE 20 INSTALLATION EVENT WILL ALSO BE SCHOLARSHIP FUNDRAISER

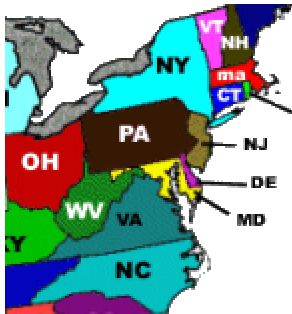
MDSPE members and guests will be off to Australia on June 20 when our annual installation event includes a fundraiser for the scholarship fund of the MDSPE Foundation. Our Foundation currently underwrites scholarship for upper-class engineering students at the University of Maryland College Park, The Johns Hopkins University and Morgan State University. More details will be coming to you soon. We are currently soliciting Sponsorships for the event.



Those attending the event will see a presentation on the building of the exhibit, tour the exhibit and have the opportunity for a rare behind-the-scenes visit to the mechanical spaces that support the 64,500 square foot that is 120 feet high at its tallest point.

VIRGINIA, PENNSYLVANIA, EDGE TOWARD REQUIRING CONT. ED.

Responding to their respective state societies of professional engineers, our neighbors across borders to the north and south are preparing to require mandatory continuing education or continuing professional competency. With so many of our members having dual or multiple licenses, the MDSPE Board is carefully monitoring the progress.



Virginia has had an enabling law on the books for all design professions for probably a decade, but the Board having the authority to promulgate the regulations has not acted due to resistance from above. Now they have been told to promulgate the regulations. VSPE expects to have a voice in the regulations ultimately adopted, a process likely to take a year. The other design profession societies supported the legislation. The Virginia legislation requires 16 hours biennially.

The Pennsylvania legislature is working on a bill that would require each engineering licensee to obtain 24 PDH credits during the biennial renewal period. The bill is a defensive action on the part of PSPE, which has a large number of dual-licensed members struggling to comply with the new New York and Ohio requirements. The idea is to be able to complete your requirements at home instead of traveling to a neighboring state to comply.

More than 30 states currently have some form of continuing education requirements for professional engineers, although the requirements vary widely from one state to another and can affect reciprocity of a license. West Virginia has had a requirement for number of years, Ohio passed a law last year, and Kentucky is in the process. Maryland currently has requirements for architects and surveyors. MDSPE would like to hear your thoughts. We'd especially like to hear from members who are licensed in other states.

MARYLAND DESIGN BOARDS CHALK UP \$590,000 SURPLUS

Fueled with more than \$1.5 million in revenues from professional engineers and \$561,000 from architects, the design boards in the Maryland Department of Licensing & Regulation have racked up a surplus of \$589,945 for their first two years of operation under the "special funding" legislation enacted in 2003.

When the special funding law was enacted, MDSPE went along with the biennial license fee increase for PEs to \$78 from \$20 due to the uncertainties of how the experiment would work out. As it stood at the end of the past fiscal year, the PE Board had generated a surplus of \$789,245 and the architect board a surplus of \$236,292. Meanwhile the surveyor, landscape architect and interior designer boards racked up a \$435,620 deficit by reducing the fees for their licensees.

Various ideas are being floated to eliminate the surplus, including subsidizing the cost of the Fundamentals of Engineering exams for candidates and rolling back license fees. Look for details at www.mdspe.org and click on State Society.

* * *

MDSPE IS 5TH AMONG THE 50 STATE PE SOCIETIES IN NEW MEMBER GROWTH

If you haven't paid this year's dues yet, you are about to be dropped. That would be a setback for us as well as for you.